

TRIM LEVELS



Go to the www.alfaromeo.it site and click on Car Configurator in the Giulietta section to outfit every detail of your car online.

IMPRESSION	PROGRESSION (in addition to the features of Impression)	DISTINCTIVE (in addition to the features of Progression)	EXCLUSIVE (in addition to the features of Distinctive)	QUADRIFOGLIO VERDE (in addition to the features of Distinctive)
<ul style="list-style-type: none"> Daytime Running Lights (LED lights) Dark finish headlights Heated electric door mirrors in body colour Front door handles with polished chrome finish Rear spoiler 16" steel wheels with 205/55 tyres Isofix attachments for child restraint system Two-tone Black-Anthrax fabric interior Light grey internal mouldings Height-adjustable driver's seat Split folding rear seat Passenger seat with oddments pocket on the back Central locking 12 V power socket in the luggage compartment 6 airbags: 2 front, 2 side, 2 window bags ABS with Brake Assistant Q2 electronic differential ESC with ASR and Hill Holder Alfa climate control Alfa Romeo DNA Front and rear electric windows Start & Stop with GSI Dual Pinion active steering TPMS Trip Computer CD/USB receive Kenwood KDC-3057UR Passenger sun visor with mirror that can be lit and obscured 	<ul style="list-style-type: none"> 16" dual-spoke alloy wheels with 205/55 tyres Front armrest with built-in storage compartment Multifunction steering wheel Cruise Control Uconnect™ 5" Radio 	<ul style="list-style-type: none"> Rear parking sensors 17" burnished dual-spoke alloy wheels with 225/45 tyres Chrome-plated window frame Front fog lights Twin tailpipe* Two-tone Competizione fabric interior Mid grey internal mouldings Refrigerated storage compartment Front seats with oddments pocket on the back Multifunction leather steering wheel Alfa dual zone automatic climate control Trip Computer with Matrix display Rear seat climate control vent Front sun visors with mirror that can be lit and obscured 	<ul style="list-style-type: none"> Door mirror covers with polished chrome finish 17" spoked alloy wheels with 225/45 tyres Front parking sensors Moisture sensor with device for odour detection Windscreen with dark band, rain and dusk sensor Two-tone fabric and leather interior Rear seats with central head restraint and armrest with through-loading system Electrochromic interior rear-view mirror Alfa dual zone automatic climate control Electrically controlled folding door mirrors Electric front seat lumbar adjustment Height-adjustable passenger seat 	<ul style="list-style-type: none"> External Quadrifoglio Verde badge Door mirror covers with satin chrome finish Tinted rear windows Sports ride with lowered suspension Oversize Brembo braking system with red callipers Front door handles with satin chrome finish Side skirts Twin tailpipe Aluminium kick plate with Quadrifoglio Verde logo Black interior Leather and Alcantara seats with Alfa Romeo logo Dark grey internal mouldings Aluminium sports pedal unit Multifunction leather sports steering wheel with white stitching Front parking sensors Height-adjustable passenger seat Rear seats with central head restraint and armrest with through-loading system

SPORTIVA PACK (On Exclusive)	SPORT PACK (on Distinctive, Exclusive)	VISIBILITY PACK (On Distinctive)	LUSSO PACK (On Exclusive, Quadrifoglio Verde)	PREMIUM PACK (On Exclusive, Quadrifoglio Verde)
<ul style="list-style-type: none"> Dark grey internal mouldings Satin chrome door mirror covers Black interior Side skirts Sports ride Multifunction leather sports steering wheel with white stitching in pelle con cuciture bianche Aluminium sports pedal unit Tinted rear windows Aluminium kick plate with Quadrifoglio Verde logo Front door handles with satin chrome finish External Sportiva badge Oversize Brembo braking system with red callipers Leather and Alcantara interior with Alfa Romeo logo 18" turbine-design alloy wheels with dark finish and 225/40 tyres 	<ul style="list-style-type: none"> Dark grey internal mouldings Door mirror covers with satin chrome finish Black interior Side skirts Sports ride Multifunction leather sports steering wheel with red stitching Aluminium sports pedal unit Tinted rear windows Aluminium kick plate Front door handles with satin chrome finish 	<ul style="list-style-type: none"> Electrically controlled folding door mirrors Electrochromic interior rear-view mirror Windscreen with dark band, rain and dusk sensor 	<ul style="list-style-type: none"> Electrically adjustable front seats with memory and lumbar support Full grain leather interior with "cannelloni" rolls Heated front seats Uconnect™ 6.5" Radio Nav 	<ul style="list-style-type: none"> Telescopic headlight washers Bi-Xenon headlights with Adaptive Frontlight System Sun roof with extensive glazed area Bose® Hi-Fi system with 9 speakers and subwoofer Black interior



www.alfaromeo.com

DOWNLOAD



The App that offers information, services and support.



CALL



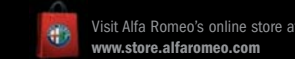
SHARE ON



FOLLOW



E-COMMERCE



Data, descriptions and illustrations are intended solely as a guide and product characteristics may differ from those represented, sometimes for manufacturing reasons. Alfa Romeo reserves the right to make any changes to its products. Some of the features described and/or photographed in this brochure are options. See the price list for a full list. Alfa Romeo - Marketing - 04.9.1811.08 - S - 10/13 - Printed in Italy - Stamperia Artistica Nazionale S.p.A. - Trofarello

Dealer's stamp

Giulietta





GIULIETTA

STYLE

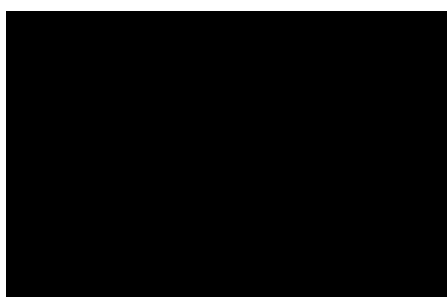
- Aerodynamic design
- Sleek and muscular lines
- Horizontal dashboard configuration
- Three-spoke sports steering wheels
- Comfortable and snug seats
- Italian style in the details

ENGINE VERSIONS AND EFFICIENCY

- Second-generation Alfa MultiAir
- Second-generation MultiJet diesel
- 1750 Tbi engine with Scavenging technology
- 1.4 Turbo Petrol LPG engine
- Alfa TCT
- Start & Stop and Gear Shift Indicator

BODY COLOURS

PASTEL

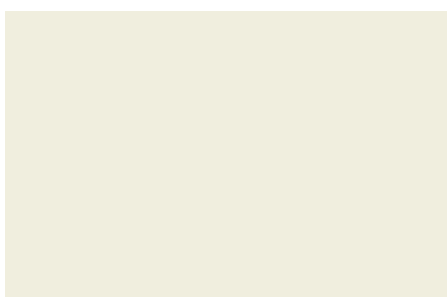


601 (opt 5CF)
Black

NON-STANDARD PASTEL



289 (opt 5CA)
Alfa Red



296 (opt 5B2)
Ghiaccio White

METALLIC



763 (opt 5DP)
Bronze



764 (opt 4SA)
Moonlight Pearl



620 (opt 210)
Alfa Silver



318 (opt 5CC)
Magnesio Grey

METALLIC



319 (opt 5CD)
Antracite Grey

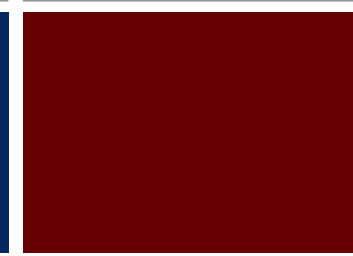


805 (opt 58B)
Etna Black



486 (opt 5DN)
Anodizzato Blue

THREE-LAYER METALLIC



134 (opt 270)
Competizione Red

TRIM LEVEL/PAINT/INTERIOR COMBINATIONS

TRIM LEVELS	IMPRESSION	PROGRESSION			DISTINCTIVE				EXCLUSIVE						QUADRIFOGLIO VERDE				
		Two-tone Black-Anthracite fabric	Two-tone Black-Anthracite fabric	Black "cannelloni" leather	Black-Tobacco two-tone Competizione fabric	Grey Competizione fabric	Black "cannelloni" leather	Red "cannelloni" leather	Tobacco "cannelloni" leather	Two-tone Black-Anthracite fabric and leather	Two-tone Tobacco-Anthracite fabric and leather	Black "cannelloni" leather	Red "cannelloni" leather	Tobacco "cannelloni" leather	Leather and Alcantara with Alfa Romeo logo	Leather and Alcantara with Alfa Romeo logo	Black "cannelloni" leather	Red "cannelloni" leather	Tobacco "cannelloni" leather
Seat upholstery	Two-tone Black-Anthracite fabric	Two-tone Black-Anthracite fabric	Black "cannelloni" leather	Black-Tobacco two-tone Competizione fabric	Grey Competizione fabric	Black "cannelloni" leather	Red "cannelloni" leather	Tobacco "cannelloni" leather	Two-tone Black-Anthracite fabric and leather	Two-tone Tobacco-Anthracite fabric and leather	Black "cannelloni" leather	Red "cannelloni" leather	Tobacco "cannelloni" leather	Leather and Alcantara with Alfa Romeo logo	Leather and Alcantara with Alfa Romeo logo	Black "cannelloni" leather	Red "cannelloni" leather	Tobacco "cannelloni" leather	
Door panels and dashboard surround	Black	Black	Black	Black	Black	Black	Red	Tobacco	Black	Tobacco/Black	Black	Red	Tobacco	Black	Black	Black	Red	Tobacco	
Internal mouldings	Light grey	Light grey	Light grey	Mid grey	Mid grey	Mid grey	Mid grey	Mid grey	Mid grey	Mid grey	Mid grey	Mid grey	Mid grey	Mid grey medio	Dark grey	Dark grey	Dark grey	Dark grey	Dark grey
Interior code	298	298	402	685	168	408	401	465	341	343	408	401	465	323	323	923	901	470	

PASTEL																			
601 Black (opt 5CF)	●	●	○	●	●	○	○	○	●	●	○	○	○	○	○	●	○	○	○

NON-STANDARD PASTEL																			
289 Alfa Red (opt 5CA)	-	●	○	●	●	○	○	○	●	●	○	○	○	○	○	●	○	○	○
296 Ghiaccio White (opt 5B2)	-	●	○	●	●	○	○	○	●	●	○	○	○	○	○	●	○	○	○

METALLIC																			
763 Bronze (opt 5DP)	-	●	○	●	●	○	-	○	●	●	○	-	○	-	-	-	-	-	-
764 Moonlight Pearl (opt 4SA)	-	●	○	●	●	○	○	○	●	●	○	○	○	○	○	●	○	○	○
620 Alfa Silver (opt 210)	●	●	○	●	●	○	○	○	●	●	○	○	○	○	○	●	○	○	○
318 Magnesium Grey (opt 5CC)	-	●	○	●	●	○	○	○	●	●	○	○	○	○	○	●	○	○	○
319 Antracite Grey (opt 5CD)	●	●	○	●	●	○	○	○	●	●	○	○	○	○	○	●	○	○	○
805 Etna Black (opt 58B)	-	●	○	●	●	○	○	○	●	●	○	○	○	○	○	●	○	○	○
486 Anodizzato Blue (opt 5DN)	-	●	○	●	●	○	-	○	●	●	○	-	○	○	○	●	○	-	○

THREE-LAYER METALLIC																			
134 Competizione Red (opt 270)	-	-	-	●	●	○	○	○	●	●	○	○	○	○	○	●	○	○	○



MAKE WAY FOR ALFA ROMEO PERSONALITY.

SAFETY AND TECHNOLOGY

- Third load line
- Alfa Q2 electronic differential
- Alfa Active Steering with DST
- Pre-Fill and Hill Holder
- Bi-Xenon headlights with Adaptive Frontlight System
- Uconnect™ multimedia platform

DYNAMISM

- Compact architecture
- Alfa DNA driving selector
- Alfa Active Steering with Dual Pinion
- Front MacPherson suspension
- Rear Multilink suspension





STYLE

UNIQUE DESIGN FOR A SALOON THAT'S DIFFERENT FROM ALL THE OTHERS.

The feisty front end, embellished by the Alfa Romeo shield and the large LED headlights. Then, the sleek profile running across the 5 doors and side musculature. At the rear end, the aerodynamic silhouette of the spoiler and the unmistakable beam of light cast by the rear light clusters. This is the Giulietta: different features that merge into an elegant and harmonious style, which is both sporty and rational at once. It is what ranks the Alfa Romeo saloon a cut above the rest.

- ◉ Stylised grille, an evolution of the classic Alfa Romeo motif.
- ◉ Large LED headlights, the beguiling look of the Giulietta.
- ◉ Three-spoke steering wheel with central aluminium insert inspired by the Alfa Romeo shield.
- ◉ Dashboard with a clean and contemporary style, with distinctive central band.
- ◉ New dashboard profiles and coordinated door panels.



COMFORT AND FUNCTIONALITY: WELCOME ABOARD THE GIULIETTA.

ROOM TO RELAX: on the 5 sporty, wraparound, comfortable seats with leather, fabric and Alcantara upholstery. In the passenger compartment, where the colours and high-quality inserts on the dashboard, tunnel and doors convey the all-Italian attention to detail. ROOM FOR RATIONALITY: in the horizontal dashboard configuration, where all the controls are designed to afford total vehicle control without distractions, for an even more intense driving feeling. ROOM FOR EFFICIENCY: in the spacious 350 litre luggage compartment. All you have to do is grab the sporty three-spoke steering wheel and set off on a long trip.

- ◉ Seats with an even more comfortable and snug configuration.
- ◉ In the various trim levels, contrasting colour inserts and stitching.
- ◉ A determined sporty personality, thanks to the new fabric grains.
- ◉ More space available for personal effects in the convenient storage compartments.
- ◉ Effective passenger compartment sound insulation for excellent acoustic comfort.





ENGINE VERSIONS AND EFFICIENCY

SUSTAINABLE POWER.
THIS IS WHAT MAKES THE GIULIETTA GO.

The Alfa Romeo Giulietta combines superior performance levels with eco-friendliness, with a wide range of engines to suit various requirements: petrol, diesel and LPG; all turbos which are type-approved according to the strictest European standards. Three sophisticated turbo petrol engines: the 1.4 105 HP or 120 HP, and the extraordinary MultiAir 170 HP, which is also available with Alfa TCT. Dedicated to those who especially want to minimise fuel consumption and emission levels, the 1.4 120 HP is also available in a turbo LPG version, providing the same performance levels as the petrol engine. For those who prefer diesel, there are three second-generation MultiJet versions to choose from: the 1.6 JTD_m 105 HP; the spectacular 2.0 JTD_m 150 HP - with a segment-beating torque value - or the 2.0 JTD_m 170 HP. And last but not least, an exceptional engine: the dynamic 1750 Turbo Petrol version with direct injection and 235 HP featuring Scavenging technology combined with the exclusive Quadrifoglio Verde trim level. The best in sportiness in the Giulietta range.

	1.4 Turbo Petrol105 HP	1.4 Turbo Petrol120 HP	1.4 TP MultiAir 170 HP/TCT	1750 TBI235 HP	1.6 JTD_m105 HP	2.0 JTD_m150 HP	2.0 JTD_m170 HP	1.4 Turbo Petrol LPG120 HP
No. of cylinders, layout	4, in line	4, in line	4, in line	4, in line	4, in line	4, in line	4, in line	4, in line
Displacement cm ³	1368	1368	1368	1742	1598	1956	1956	1368
Max power kW - rpm	77-5000	88-5000	125-5500	173-5500	77-4000	110-3750	125-4000	88-5000
Torque Nm-rpm	215-2500	215-2500	250-2500	340-1900	320-1750	380-1750	350-1750	206-1750
Weight kg	1280	1280	1290/1310	1320	1310	1320	1320	1317
Top speed km/h	185	195	218	242	185	210	218	195
Acceleration 0-100 km/h (secs)	10,6	9,4	7,8 / 7,6	6,8	11,3	8,8	8,0	10,3
CO ₂ emissions (g/km)	148	148	131 / 119	177	104	110	124	149 Petrol - 134 LPG
Environmental classification	Euro 6	Euro 6	Euro 6	Euro 5	Euro 5+	Euro 5+	Euro 5	Euro 5
Start & Stop	Standard	Standard	Standard	N.A.	Standard	Standard	Standard	N.A.

ENVIRONMENTALLY-FRIENDLY HIGH-PERFORMING TECHNOLOGIES.

SECOND-GENERATION ALFA MULTIAIR. The Giulietta implements the latest version of the MultiAir system: technology that has set a new motoring standard. Alfa MultiAir allows the valve lift profile to be modified in response to the actual demand from the engine, thereby optimising combustion. The results are revolutionary: compared to petrol engines of the same displacement, there is an increase in maximum power of between 10% and 35%, up to 15% more torque, up to 12% improved pick-up and up to 10% fewer emissions and lower fuel consumption. The MultiAir II evolution allows a further reduction in CO₂ emissions and fuel consumption without compromising performance levels and driving satisfaction, thanks to the evolution of the valve control strategies and to an improved distribution of torque even at low revs.

◉ GEAR SHIFT INDICATOR (GSI). The technology which suggests when to change to the gear best suited to optimise engine efficiency, reducing consumption levels further. An indicator light notifies the driver when it's time to change gear.

◉ START & STOP. This device temporarily stops the engine and restarts it when driving your Giulietta around town. It can be deactivated by the driver, and reduces fuel consumption, emission levels and noise pollution.

◉ SECOND-GENERATION MULTIJET DIESEL. Truly innovative engines, which ensure higher performance levels and more savings. Thanks to the sophisticated MultiJet system, they can provide a higher injection frequency (up to 8 injections) and control the quantity of diesel introduced into the combustion chamber more accurately. This process ensures immediate benefits in terms of fuel consumption, emission levels and driveability. One example is the new 2.0 JTD_m 150 HP engine, which provides the best compromise between reduced fuel consumption and typical Alfa Romeo driving satisfaction: with a segment-beating torque value (380 Nm at 1750 rpm), it ensures exceptional responsiveness in terms of pick-up.

◉ 1.4 TURBO PETROL LPG. A dual fuel turbo petrol and LPG system designed, produced and guaranteed by Alfa Romeo. The 1.4 turbo LPG combines the performance levels of a petrol engine with the utmost eco-friendliness. It reduces nitrogen and carbon dioxide emissions, offering a total range of over 1,200 km. It can also be driven where traffic restrictions are in force.

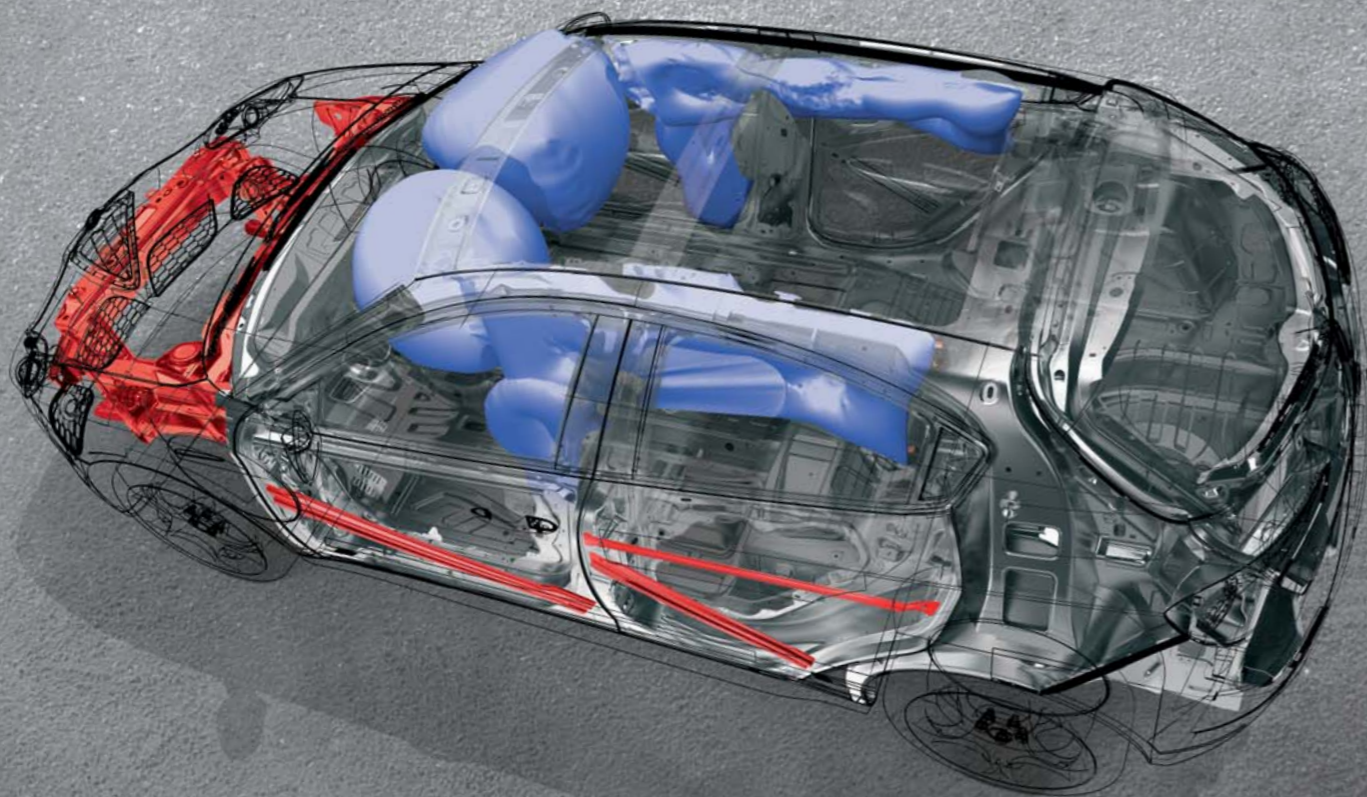


SPORTY, IN PURE ALFA ROMEO STYLE.

⦿ ALFA TCT. This is the automatic Twin Clutch Transmission with dual dry clutch, conceptually consisting of two gearboxes in parallel that allow the next gear to engage while the previous one is still engaged. Alfa TCT offers continuous torque delivery without losing any power while shifting gears, which becomes faster and more direct, to result in an even more exciting driving experience. But that's not all. This transmission allows you to choose between automatic and sequential mode, according to whether you prefer a more comfortable or sporty drive: in both cases Alfa TCT offers high levels of driving comfort while optimising engine efficiency and drastically reducing fuel consumption and emission levels.

⦿ SCAVENGING TECHNOLOGY. On the direct injection 1750Tbi 235 HP, the Giulietta implements Scavenging: exclusive technology that controls and optimises fuel metering, dual variable valve timing system position, spark advance and initial timing instant by instant. This technology affords benefits both in terms of performance levels and fuel consumption. Specifically, Scavenging makes it possible to maximise torque even at very low revs, eliminating all discontinuity in power transmission and any turbo lag. This means greater response speed from the engine and excellent pick-up performance levels, for even sportier driving.

SAFETY AND TECHNOLOGY



TO TRAVEL WORRY-FREE.

The Giulietta makes the comfort of its passengers top priority. For this reason, it offers segment-beating safety levels, having been awarded the five-star rating in the strict Euro NCAP tests. But that's not all. To ensure you have a travelling experience marked by comfort, the car is fitted with a multimedia platform which allows you to keep all the various technological features under control using a single device: Uconnect™.

○ ACTIVE AND PASSIVE SAFETY. Mechanics and technology for guaranteed protection: third load line to limit penetrations into the passenger compartment. Alfa Q2 electronic self-locking differential that optimises the transfer of engine torque to the wheels. It improves the vehicle's behaviour when cornering, keeping it on route even at high speed or conditions of low road grip. Alfa Active Steering with Dynamic Steering Torque, the active electronic steering which, thanks to interaction between the power steering and the ESC system, suggests effective countersteering manoeuvres in the event of loss of road grip, improving safety when driving. Pre-Fill, which reduces stopping distances during emergency braking. Hill Holder, for easier hill starts. AFS (Adaptive Frontlight System), which automatically regulates the headlight beam in accordance with the steering direction.

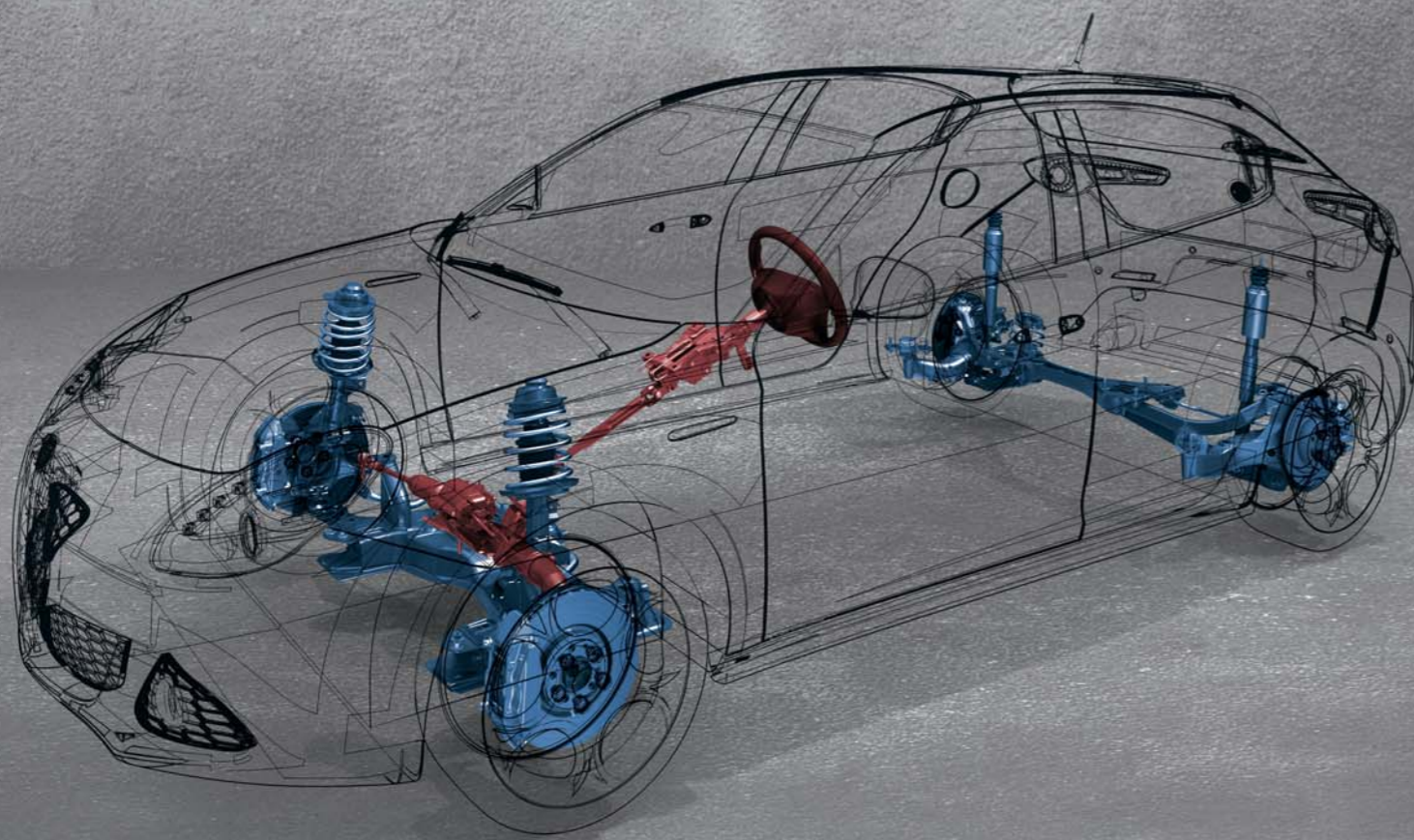


○ UCONNECT™ 5" RADIO. A multimedia platform fitted with a touch screen to access the AM/FM radio, CD player, media player with USB or AUX-in connection. In addition, it features a Bluetooth interface to manage incoming calls and text messages*, listen to streaming music and listen to web radio stations from your smartphone. Uconnect™ 5" Radio, thanks to the text to speech functions to read incoming text messages and voice recognition, allows you to control music, your mobile phone* and media player without taking your hands off the wheel.

○ UCONNECT™ 6.5" RADIO NAV. This is a sophisticated device with a high-definition 6.5" touch screen which takes the Uconnect™ 5" Radio's features and adds a GPS satellite navigation system with pre-loaded maps and 3D views for an even more realistic display of the route. Thanks to voice recognition, finding your way is even simpler and safer: simply say the desired address out loud and the system recognises the destination, activating voice instructions and displaying the suggested route on the Radio Nav display.



*The list of compatible mobile phones is available online at: www.alfaromeo.com



DYNAMISM

AGILE AND COMFORTABLE, IN EVERY SITUATION.

Sporty enough to satisfy even the most expert of drivers, and just as perfect for long journeys and short city transfers. The Giulietta is designed to offer both maximum comfort and the exceptional fun at the wheel that is typical of Alfa Romeo cars together: this result was achieved thanks to the brand's long-standing sports know-how.

- COMPACT ARCHITECTURE. The Giulietta features unprecedented architecture: it uses aluminium, magnesium and high-strength steels, which combine maximum strength and rigidity with significant weight reduction. This body is associated with the platform that interacts synergetically with each individual mechanical and electronic component on the car to guarantee agility, comfort and safety.



- ALFA DNA. This is the Alfa Romeo system that lets you choose the car's dynamic behaviour, and then intervenes on the engine torque, on the brakes via the Pre-Fill device, on the Alfa TCT gear shift logics, on the accelerator response, on the ESC control system, on the Alfa Q2 electronic self-locking differential and on the ASR traction control. The driver can enable three driving modes depending on the route and road conditions.

DYNAMIC. This setting prioritises the performance and reactivity of the Giulietta: steering is more responsive, gear shifts are faster and the electronic control systems are enabled discreetly, leaving room for typical Alfa Romeo fun at the wheel.

NATURAL. Perfect on urban routes and on the motorway: the dynamic behaviour is aimed at comfort and at containing fuel consumption.

ALL WEATHER. The right mode for tackling bad weather and low-grip conditions. To enhance road grip, the gear shift logic is smoother and torque control increases during acceleration.

- ALFA ACTIVE STEERING WITH DUAL PINION. The innovative Dual Pinion steering offers a "filter-free" driving feeling and complete integration with both the dynamic control systems and Alfa DNA. The dual pinion configuration guarantees a direct and sensitive steering response in every situation, superior driving comfort thanks to the variable power assistance, great ease of handling around town and during parking manoeuvres and reduced fuel consumption, up to 3% lower compared to traditional systems.

- SUSPENSION. At the front, the Giulietta is fitted with sophisticated MacPherson suspension, ideal for sporty and accurate bend approaches. At the rear, it features a new Multilink suspension layout devised to offer great road-holding and a superior level of comfort.



TRIM VERSIONS AND EQUIPMENT

IMPRESSION

Available on: 1.4 TP 105 HP

PROGRESSION

Available on: 1.4 Turbo Petrol 105 HP - 1.4 Turbo Petrol 120 HP
1.4 Turbo Petrol LPG 120 HP - 1.6 JTD_M 105 HP



Alfa climate control (standard)



Start & Stop with GSI (standard)



Alfa Romeo DNA (standard)



Multifunction steering wheel with radio controls (opt)



Cruise control (standard)



Uconnect™ 5" Radio (standard)

- Daytime Running Lights (LED lights)
- Dark finish headlights
- Heated electric door mirrors in body colour
- Front door handles with polished chrome finish
- Rear spoiler
- 16" steel wheels with 205/55 tyres
- Isofix attachments for child restraint system
- Two-tone Black-Anthracite fabric interior
- Light grey internal mouldings
- Height-adjustable driver's seat
- Split folding rear seat
- Passenger seat with oddments pocket on the back
- Remote central locking
- 12 V power socket in the luggage compartment
- 6 airbags: 2 front, 2 side, 2 window bags

- ABS with Brake Assistant
- Q2 electronic differential
- ESC with ASR and Hill Holder
- Alfa climate control
- Alfa Romeo DNA
- Electric front and rear windows
- Start & Stop with Gear Shift Indicator
- Dual Pinion active steering
- TPMS
- Trip Computer
- Kenwood KDC-3057UR CD/USB Receiver
- Passenger sun visor with mirror that can be lit and obscured



Two-tone fabric
298 Black-Anthracite (standard)



Two-tone fabric
298 Black-Anthracite (standard)



Leather with "cannelloni" rolls
402 Black (opt)

- AS IMPRESSION, PLUS:**
- 16" dual-spoke alloy wheels with 205/55 tyres
 - Front armrest with built-in storage compartment
 - Multifunction steering wheel
 - Cruise Control
 - Uconnect™ 5" Radio

DISTINCTIVE

Available on: 1.4 Turbo Petrol 120 HP - 1.4 Turbo Petrol LPG 120 HP - 1.4 Turbo Petrol MultiAir 170 HP - 1.4 Turbo Petrol MultiAir 170 HP TCT - 1.6 JTD_M 105 HP - 2.0 JTD_M 150 HP - 2.0 JTD_M 170 HP

EXCLUSIVE

Available on: 1.4 Turbo Petrol MultiAir 170 HP - 1.4 Turbo Petrol MultiAir 170 HP TCT - 1.6 JTD_M 105 HP - 2.0 JTD_M 150 HP - 2.0 JTD_M 170 HP



○ Rear parking sensors (standard)

○ Alfa dual zone automatic climate control (standard)

○ Multifunction leather steering wheel (standard)

○ 341 Two-tone fabric and leather seats Black- Anthracite (standard)

○ 433 Rear seats with central head restraint and armrest with through-loading system (standard)

○ Uconnect™ 6.5" Radio Nav (opt)

AS PROGRESSION, PLUS:

- Rear parking sensors
- 17" burnished dual-spoke alloy wheels with 225/45 tyres
- Chrome-plated window frame
- Twin tailpipe*
- Two-tone Competizione fabric interior
- Mid grey internal mouldings
- Refrigerated storage compartment
- Front seats with oddments pocket on the back
- Multifunction leather steering wheel
- Alfa dual zone automatic climate control
- Trip Computer with Matrix display
- Rear seat climate control vent
- Front sun visors with mirror that can be lit and obscured



Competizione fabric
168 Grey (standard)
685 Black-Tobacco (standard altern.)



Leather with "cannelloni" rolls
408 Black (opt)
401 Red (opt)
465 Tabacco (opt)



Two-tone leather and fabric
341 Black-Anthracite (standard)
343 Tobacco-Anthracite (standard altern.)



Leather with "cannelloni" rolls
465 Tabacco (opt)
408 Black (opt)
401 Red (opt)

AS DISTINCTIVE, PLUS:

- Door mirror covers with polished chrome finish
- 17" spoked alloy wheels with 225/45 tyres
- Front parking sensors
- Moisture sensor with odour detection device
- Windscreen with dark band, rain and dusk sensor
- Two-tone fabric and leather interior
- Rear seats with central head restraint and armrest with through-loading system
- Electrochromic interior rear-view mirror
- Electrically controlled folding door mirrors
- Electric front seat lumbar adjustment
- Height-adjustable passenger seat

* only for 2.0 JTD_M 150 HP and 2.0 JTD_M 170 HP

QUADRIFOGLIO VERDE

Available on: 1,750 TBi 235 HP



External Quadrifoglio Verde badge (standard)

Door mirror covers with satin chrome finish (standard)

Oversize Brembo braking system with red calipers (standard)

323 Black Alcantara and leather seat with Alfa Romeo logo (standard)

Aluminium sports pedal unit (standard)

THE QUADRIFOGLIO.

A symbol that is deep-rooted in Alfa Romeo's past and that has autographed the great racing cars. The Giulietta, a car that embodies the perfect combination of sportiness and contemporary charm, is carrying the Quadrifoglio forward into a new era. Its performance is the result of its 235 HP 1750 direct injection turbo petrol engine with dual continuous variable valve timing and turbocharger with Scavenging system and intercooler. The weight/power ratio of 5.6 kg/HP, the sports ride with lowered suspension and the powerful braking system ensure the handling of a racing vehicle on the road.



Leather and Alcantara
323 Black with Alfa Romeo logo (standard)



Leather with "cannelloni" rolls
901 Red (opt)



923 Black (opt)
470 Tobacco (opt)

AS DISTINCTIVE, PLUS:

- External Quadrifoglio Verde badge
- Door mirror covers with satin chrome finish
- Tinted rear windows
- Sports ride with lowered suspension
- Oversize braking system
- Brembo with red calipers
- Front door handles with satin chrome finish
- Side skirts
- Twin tailpipe
- Aluminium kick plate with Quadrifoglio Verde logo
- Black interior
- Leather and Alcantara seats with Alfa Romeo logo
- Dark grey internal mouldings
- Aluminium sports pedal unit
- Multifunction leather sports steering wheel with white stitching
- Front parking sensors
- Height-adjustable passenger seat
- Rear seats with central head restraint and armrest with through-loading system

SPORTIVA PACK

(Available on Exclusive)

- Dark grey internal mouldings
- Satin chrome door mirror covers
- Black interior
- Side skirts
- Sports ride
- Multifunction leather sports steering wheel with white stitching
- Aluminium sports pedal unit
- Tinted rear windows
- Aluminium kick plate with Quadrifoglio Verde logo
- Front door handles with satin chrome finish
- External Sportiva badge
- Oversize Brembo braking system with red calipers
- Leather and Alcantara interior with Alfa Romeo logo
- 18" turbine-design alloy wheels with dark finish and 225/40 tyres



External Sportiva badge



18" turbine-design alloy wheels with dark finish and 225/40 tyres

VISIBILITY PACK

(Available on Distinctive)

- SElectrically controlled folding door mirrors
- Electrochromic interior rear-view mirror
- Windscreen with dark band, rain and dusk sensor



Windscreen with dark band, rain and dusk sensor



Electrochromic interior rear-view mirror



Satin chrome door mirror covers



Aluminium kick plate with Quadrifoglio Verde logo

LUSO PACK

(Available on Exclusive, Quadrifoglio Verde)

- Electrically adjustable front seats with memory and lumbar support
- Full grain leather interior with "cannelloni" rolls
- Heated front seats
- Uconnect™ 6.5" Radio Nav



Uconnect™ 6.5" Radio Nav



Electrically adjustable front seats with memory and lumbar support

SPORT PACK

(Available on Distinctive, Exclusive)

- Dark grey internal mouldings
- Door mirror covers with satin chrome finish
- Black interior
- Side skirts
- Sports ride
- Multifunction leather sports steering wheel with red stitching
- Aluminium sports pedal unit
- Tinted rear windows
- Aluminium kick plate
- Front door handles with satin chrome finish



Multifunction leather sports steering wheel with red stitching



Side skirts

PREMIUM PACK

(Available on Exclusive, Quadrifoglio Verde)

- Telescopic headlight washers
- Bi-Xenon headlights with Adaptive Frontlight System
- Sun roof with extensive glazed area
- Bose® Hi-Fi system with 9 speakers and subwoofer
- Black interior



Sun roof with extensive glazed area



Bose Hi-Fi system

CHARACTERISTICS	1.4 TURBO PETROL 105 HP	1.4 TP 120 HP	1.4 TURBO PETROL MULTIAIR 170 HP/TCT
No. of cylinders, layout	4, in line	4, in line	4, in line
Bore × stroke (mm)	72×84	72×84	72×84
Displacement (cm ³)	1368	1368	1368
Compression ratio	9,8:1	9,8:1	10,0:1
Maximum power kW (HP-EC) at rpm (DYNAMIC)	77 (105) at 5000 rpm	88 (120) at 5000 rpm	125 (170) at 5500 rpm
Peak torque Nm (kgm-EC) at rpm (DYNAMIC)	215 (22.0) at 2500 rpm	215 (22) at 2500 rpm	250 (25.5) at 2500 rpm
Timing system (control)	Toothed belt with hydraulic tappets with fixed timing		Toothed belt with hydraulic tappets and intake side MultiAir system
Fuel supply	MPFI supercharged through exhaust gas turbocharger with intercooler		MPFI supercharged and MultiAir direct valve control system, intercooler
Start & Stop system	Standard	Standard	Standard
ELECTRICAL SYSTEM (12 V)			
Battery: capacity (Ah) / Generator (A)	63 Ah/450	63 Ah/450	63 Ah/450
TRANSMISSION			
Drive	Front	Front	Front
Gearbox	6-speed manual	6-speed manual	6-speed manual/Twin clutch
TYRES			
Standard version	205/55 R16 91V	205/55 R16 91V	225/45 R17 91W
STEERING			
Steering box	Dual Pinion	Dual Pinion	Dual Pinion
Kerb-to-kerb turning circle (m)	10,9	10,9	10,9
SUSPENSION			
Front	Advanced MacPherson with aluminium knuckle, hollow anti-roll bar, fitted on connecting rod		
Rear	Multilink with auxiliary frame and aluminium wishbones, anti-roll bar		
DISC BRAKES			
Front (mm)	281	281	305
Rear (mm)	264	264	264
CAPACITIES - WEIGHTS			
Fuel tank (litres)	60	60	60
Kerb weight DIN (kg)	1280	1280	1290/1310
Max. towable weight (kg)	1300	1300	1300
PERFORMANCE			
Max. speed (km/h)	185	195	218
Acceleration (1 pers. + 30 kg) 0-100 km/h (s)	10,6	9,4	7,8/7,6
FUEL CONSUMPTION - EMISSIONS IN ACCORDANCE WITH DIRECTIVE 1999/100/EC			
Consumption (l/100 km) urban cycle	8,3	8,3	7,6/6,6
Extra-urban cycle	5,3	5,3	4,6/4,3
Combined cycle	6,4	6,4	5,7/5,1
CO ₂ emissions (g/km)	148	148	131/119
Environmental classification	Euro 6	Euro 6	Euro 6

1750 TBI 235 HP	1.6 JTD _M 105 HP	2.0 JTD _M 150 HP	2.0 JTD _M 170 HP	1.4 TP LPG 120 HP
4, in line	4, in line	4, in line	4, in line	4, in line
83×80.5	79.5×80.5	83×90.4	83×90.4	72×84
1742	1598	1956	1956	1368
9,2:1	16,5:1	16,5:1	16,5:1	9,8:1
173 (235) at 5500 rpm	77 (105) at 4000 rpm	110 (150) at 3750 rpm	125 (170) at 4000 rpm	88 (120) at 5000 rpm
340 (34.6) at 1900 rpm	320 (32.6) at 1750 rpm	380 (38.7) at 1750 rpm	350 (35.6) at 1750 rpm	206 (21.0) at 1750 rpm
Dual continuous variable valve timing system and toothed belt with hydraulic tappets	Toothed belt with hydraulic tappets			
Direct petrol injection and turbocharging, with Scavenging system and intercooler	Multijet 2: direct injection 1,600 bar, turbocharger and intercooler	Multijet 2: direct injection 1,600 bar, variable geometry turbocharger and intercooler	Multijet 2: direct injection 1,600 bar, variable geometry turbocharger and intercooler	MPFI supercharged through exhaust gas turbocharger with intercooler
Not available	Standard	Standard	Standard	Not available
ELECTRICAL SYSTEM (12 V)				
Battery: capacity (Ah) / Generator (A)	60 Ah/540	72 Ah/600	72 Ah/600	72 Ah/600
TRANSMISSION				
Drive	Front	Front	Front	Front
Gearbox	6-speed manual	6-speed manual	6-speed manual	6-speed manual
TYRES				
Standard version	225/45 R17 91W	205/55 R16 91V	225/45 R17 91W	225/45 R17 91W
STEERING				
Steering box	Dual Pinion	Dual Pinion	Dual Pinion	Dual Pinion
Kerb-to-kerb turning circle (m)	10,9	10,9	10,9	10,9
SUSPENSION				
Front	Advanced MacPherson with aluminium knuckle, hollow anti-roll bar, fitted on connecting rod			
Rear	Multilink with auxiliary frame and aluminium wishbones, anti-roll bar			
DISC BRAKES				
Front (mm)	330	281	305	305
Rear (mm)	278	264	264	264
CAPACITIES - WEIGHTS				
Fuel tank (litres)	60	60	60	60
Kerb weight DIN (kg)	1320	1310	1320	1320
Max. towable weight (kg)	1300	1300	1300	1300
PERFORMANCE				
Max. speed (km/h)	242	185	210	218
Acceleration (1 pers. + 30 kg) 0-100 km/h (s)	6,8	11,3	8,8	8,0
FUEL CONSUMPTION - EMISSIONS IN ACCORDANCE WITH DIRECTIVE 1999/100/EC				
Consumption (l/100 km) urban cycle	10,8	5,0	5,0	5,8
Extra-urban cycle	5,8	3,4	3,7	4,1
Combined cycle	7,6	4,0	4,2	4,7
CO ₂ emissions (g/km)	177	104	110	124
Environmental classification	Euro 5	Euro 5+	Euro 5+	Euro 5



404 16" steel wheels with 205/55 tyres



431 16" turbine-design alloy wheels with 205/55 tyres



432 16" dual-spoke alloy wheels with 205/55 tyres



435 18" turbine-design alloy wheels with 225/40 tyres



439 18" 5-hole design alloy wheels with 225/40 tyres



433 17" spoked alloy wheels with 225/45 tyres



420 17" turbine-design alloy wheels with 225/45 tyres



421 17" burnished dual-spoke alloy wheels with 225/45 tyres



55E 18" turbine-design alloy wheels with dark finish and 225/40 tyres



4AY 18" spoked alloy wheels with 225/40 tyres

Standard ● Optional ○ Not available - Linked to Pack **P**

RIMS	IMPRESSION	PROGRESSION	DISTINCTIVE	EXCLUSIVE	QUADRIFOGLIO VERDE
404 16" steel wheels with 205/55 tyres	●	-	-	-	-
431 16" turbine-design alloy wheels with 205/55 tyres	-	○	○	-	-
432 16" dual-spoke alloy wheels with 205/55 tyres	-	●	○	○	-
433 17" spoked alloy wheels with 225/45 tyres	-	○	○	●	-
420 17" turbine-design alloy wheels with 225/45 tyres	-	○	○	○	-
421 17" burnished dual-spoke alloy wheels with 225/45 tyres	-	○	●	○	●

	IMPRESSION	PROGRESSION	DISTINCTIVE	EXCLUSIVE	QUADRIFOGLIO VERDE
435 Cerchi in lega da 18" a turbina con pneumatici 225/40	-	-	○	○	○
439 Cerchi in lega da 18" a 5 fori con pneumatici 225/40	-	-	○	○	○
55E Cerchi in lega da 18" a turbina con trattamento scuro e pneumatici 225/40	-	-	-	P	○
4AY Cerchi in lega da 18" a raggi con pneumatici 225/40	-	-	○	○	○

STANDARD AND OPTIONAL EQUIPMENT

Standard ● Optional ○ Not available - Linked to Pack **P**

EXTERIORS	IMPRESSION	PROGRESSION	DISTINCTIVE	EXCLUSIVE	QUADRIFOGLIO VERDE
External Quadrifoglio Verde badge	-	-	-	-	●
External Sportiva badge	-	-	-	P	-
Door mirror covers with polished chrome finish	-	-	-	●	-
Door mirror covers with satin chrome finish	-	-	P	P	●
Chrome-plated window frame	-	-	●	●	●
Tinted rear windows	-	○	○	○	●
Twin tailpipe	-	-	●*	●*	●
Oversize Brembo braking system with red calipers	-	-	○	○ / P	●
Front door handles with satin chrome finish	-	-	P	P	●
Side skirts	-	-	P	P	●
Dark finish headlights	●	●	●	●	●
Heated electric door mirrors in body colour	●	●	●	●	●
Rear spoiler	●	●	●	●	●
Metallic paint	○**	○	○	○	○
Three-layer metallic paint	-	-	○	○	○
Pastel paint	○**	○	○	○	○
Non-standard pastel paint	-	○	○	○	○

*On DS engines ≥ HP **Colours subject to limitations

INTERIORS	IMPRESSION	PROGRESSION	DISTINCTIVE	EXCLUSIVE	QUADRIFOGLIO VERDE
Passenger sun visor with mirror that can be lit and obscured	●	●	-	-	-
Front sun visors with mirror that can be lit and obscured	-	-	●	●	●
Alfa climate control	●	●	-	-	-
Alfa dual zone automatic climate control	-	○	●	●	●
Electric front and rear windows	●	●	●	●	●
Sports setup	-	-	P	P	-
Sports ride with lowered suspension	-	-	-	-	●
Isofix attachments for child restraint system	●	●	●	●	●
Aluminium kick plate	-	-	P	P	-
Aluminium kick plate with Quadrifoglio Verde logo	-	-	-	P	●
Black interior	-	○	○ / P	○ / P	●
Rear seat climate control vent	-	○	●	●	●
Front armrest with built-in storage compartment	-	●	●	●	●

INTERIORS	IMPRESSION	PROGRESSION	DISTINCTIVE	EXCLUSIVE	QUADRIFOGLIO VERDE
Gear change controls on the steering wheel (only in combination with Alfa TCT)	-	-	●	●	-
Cruise Control	-	●	●	●	●
Leather and Alcantara interior with Alfa Romeo logo	●	-	-	P	●
Two-tone Black-Anthracite fabric and leather interior	-	-	-	●	-
Two-tone Tobacco-Anthracite fabric and leather interior	-	-	-	●	-
Full grain Black leather interior with "cannelloni" rolls	-	○	○	○	○
Full grain Red leather interior with "cannelloni" rolls	-	-	○	○	○
Full grain Tobacco leather interior with "cannelloni" rolls	-	-	○	○	○
Two-tone Black-Anthracite fabric interior	●	●	-	-	-
Two-tone Black-Tobacco Competizione fabric interior	-	-	●	-	-
Grey Competizione fabric interior	-	-	●	-	-
Smoker's kit	○	○	○	○	○
Light grey internal mouldings	●	●	-	-	-
Mid grey internal mouldings	-	-	●	●	-
Dark grey internal mouldings	-	-	P	P	●
Aluminium sports pedal unit	-	-	P	P	●
Electric front seat lumbar adjustment	-	○	○	●	○
Height-adjustable driver's seat	●	●	●	●	●
Passenger seats with oddments pocket on the back	●	●	-	-	-
Front seats with oddments pocket on the back	-	-	●	●	●
Height-adjustable passenger seat	-	○	○	●	●
Split folding rear seat	●	●	●	●	●
Electrically adjustable front seats with memory and lumbar support	-	○	○	○	○
Heated front seats	-	○	○	○	○
Rear seats with central head restraint and armrest with through-loading system	-	○	○	●	●
Electrically controlled folding door mirrors	-	○	○	●	○
Electrochromic interior rear-view mirror	-	○	○	●	○
Sun roof with extensive glazed area*	-	○	○	○	○
Refrigerated storage compartment	-	-	●	●	●
Multifunctional steering wheel	-	●	-	-	-
Multifunctional leather steering wheel	-	○	●	●	●
Multifunction leather sports steering wheel with white stitching	-	-	-	P	●
Multifunction leather sports steering wheel with red stitching	-	-	P	P	●

* Not available on the 1.4 Turbo Petrol LPG 120 HP

STANDARD AND OPTIONAL EQUIPMENT

MOPAR ORIGINAL ACCESSORIES

Di serie ● Optional ○ Non disponibile -

AUDIO/PHONE/ACCESSORIES	IMPRESSION	PROGRESSION	DISTINCTIVE	EXCLUSIVE	QUADRIFOGLIO VERDE
Trip Computer	●	●	-	-	-
Trip Computer with Matrix display	-	○*	●	●	●
Kenwood KDC-3057UR CD/USB Receiver	●	-	-	-	-
Uconnect™ 5" Radio	-	●	●	●	●
Uconnect™ 6.5" Radio Nav	-	○	○	○	○
Bose® Hi-Fi system with 9 speakers and subwoofer**	-	○	○	○	○

SAFETY/MECHANICAL	IMPRESSION	PROGRESSION	DISTINCTIVE	EXCLUSIVE	QUADRIFOGLIO VERDE
6 airbags: 2 front, 2 side, 2 window bags	●	●	●	●	●
ABS with Brake Assistant	●	●	●	●	●
Alfa Romeo DNA	●	●	●	●	●
Electronic alarm	○	○	○	○	○
Remote central locking	●	●	●	●	●
Daytime Running Lights (LED lights)	●	●	●	●	●
Q2 electronic differential	●	●	●	●	●
ESC with ASR and Hill Holder	●	●	●	●	●
Bi-Xenon headlights with Adaptive Frontlight System	-	○	○	○	○
Telescopic headlight washers	-	○	○	○	○
Windscreen with dark band, rain and dusk sensor	-	○	○	●	○
12 V power socket in the luggage compartment	●	●	●	●	●
Front fog lights	○	○*	●	●	●
16" space-saver wheel (can only be ordered with car fitted with 16" rims)*	○	○	○	-	-
17" space-saver wheel (can only be ordered with car fitted with 17" and 18" rims)*	-	○	○	○	○
Second key with remote control	○	○	○	○	○
Safe Lock (superlocking)	○	○	○	○	○
Moisture sensor with odour detection device	-	○	○	●	○
Rear parking sensors	-	○	●	●	●
Front parking sensors	-	○	○	●	●
Start & Stop with Gear Shift Indicator**	●	●	●	●	●
Dual Pinion active steering	●	●	●	●	●
Service plate and Owner Handbook	●	●	●	●	●
TPMS	●	●	●	●	●

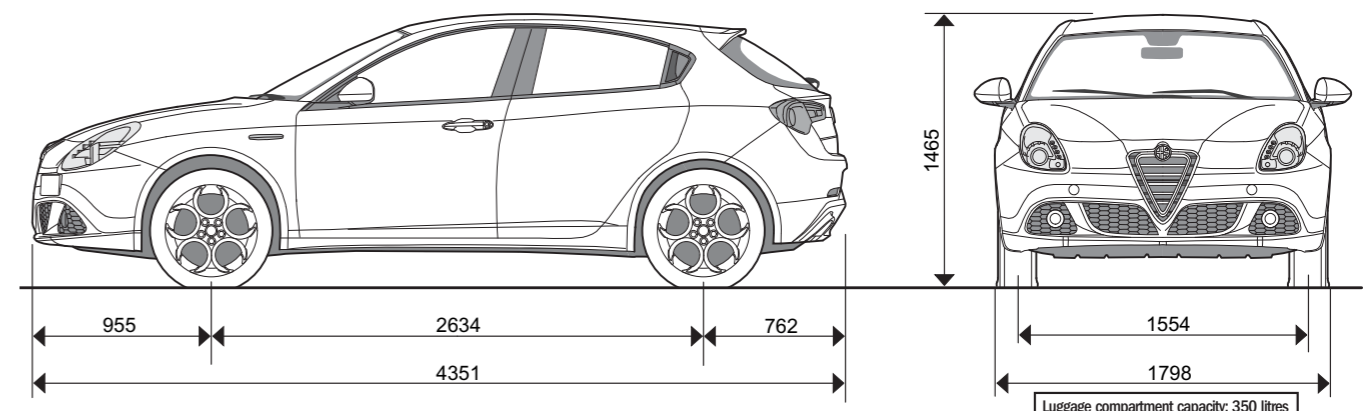


○ Carbon rear spoiler

○ Carbon gear lever knob

○ Rear dam

EXTERIORS		INTERIORS
Rear dam	18" elegant burnished alloy wheel kit	Carbon gear lever knob
Side skirts	18" turbine-design alloy wheel kit with white finish	Competizione Red gear lever knob
Carbon rear spoiler	Tyre valve cap kit with Alfa Romeo logo	Profondo Blue gear lever knob
Carbon door mirror covers	Aluminium engine oil cap	Matt black gear lever knob
Door mirror covers in polished chrome	Roof bars	Sports pedal unit kit plus aluminium kick plate
Titanio grey door mirror covers	Aluminium bicycle holder	Illuminated kick plate kit (front only)
Door mirror covers in satin chrome	Magnetic ski rack	Giulietta mat kit with red stitching
Oversized twin tailpipe kit	Splash guard tread graphic	Luggage compartment organiser with accessories
Aluminium fuel cap		Red dashboard cover panel kit



* Standard with LPG engine ** Not available with LPG engine

Driving an Alfa Romeo Giulietta is easy with a choice of the widest imaginable array of purchasing and ownership packages **Sava** : including a conventional instalment plan, leasing and even more customisable packages, all of which can be combined with services to meet every need.

VEHICLE WARRANTY

The purchase price of your Alfa Romeo car includes a 24 month Warranty that starts from the handover date and has no mileage limits. The Warranty ensures coverage for the vehicle against manufacturing defects, which will be resolved free of charge using original or reconditioned parts. Operations under Warranty are performed by Alfa Romeo Dealerships and include:

- Repair or replacement of the defective component
- Labour to carry out the replacement or repairs
- Supply of consumable materials needed to carry out the repairs under Warranty. For the duration of the vehicle Warranty, you have the benefit of roadside assistance.



ALFA ROMEO CUSTOMER RELATIONS

You can call Alfa Romeo using a single freephone number from anywhere in Europe. We are on hand to provide you with our **Roadside Assistance** services, the certainty of travelling with peace of mind. The service is active 24 hours a day, 365 days a year for:

- Towing and breakdown call-outs in the event of faults or accidents
- Information on the dealerships
- Free passenger return services (or continuation of journey)
- Hotel expense payment
- Recovery of repaired vehicle
- Cash advances
- Parts dispatch.

Information Service: everything you want to know about our models (versions, options, promotions, prices), our services and about the Alfa Romeo Dealership. The service also enables you to book a road test in your preferred car from one of our Dealerships.

Customer Relations: Alfa Romeo is at your service, committed to satisfying every need and request related to the use of your car and our aftersales services. The single freephone number 00800 2532 0000 is free of charge and can be called from all European countries. It is easy to remember: all you have to do is type the word "ALFA" on your telephone keypad.

SUPPORT AND MAINTENANCE SERVICES



MAXIMUM CARE CONVENTIONAL WARRANTY: MAXIMUM COVERAGE AND NO WORRIES

Maximum Care protects your car from electromechanical faults for up to five years. You can conveniently choose from different durations according to your needs. Furthermore, in the event of a fault, you can count on the service and professionalism of Alfa Romeo Dealerships and Authorised Workshops. You can apply for Maximum Care Warranty at any Dealership or Authorised Workshop within two years from the beginning of the warranty providing that your car has been subject to scheduled servicing as described in the Alfa Romeo Owner Handbook.

There are three options to choose from which include extending the warranty on your vehicle for electrical and mechanical faults and roadside assistance for:

+ 1 year up to 45,000 km or up to 90,000 km • + 2 years and up to 60,000 km or 120,000 km • + 3 years and up to 75,000 km or up to 150,000 km

POWERTRAIN CARE CONVENTIONAL WARRANTY: ESSENTIAL COVERAGE AND TOP SAVINGS

Powertrain Care protects your car from mechanical engine, gearbox and transmission faults for up to five years. You can conveniently choose from different durations according to your needs. Furthermore, in the event of a fault, you can count on the service and professionalism of Alfa Romeo Dealerships and Authorised Workshops. You can apply for Powertrain Care Warranty at any Dealership or Authorised Workshop within two years from the beginning of the warranty providing that your car has been subject to scheduled servicing as described in the Alfa Romeo Owner Handbook. There are three options to choose from which include extending the warranty on your vehicle for mechanical faults and roadside assistance for:

+ 1 year up to 45,000 km or up to 90,000 km • + 2 years and up to 60,000 km or 120,000 km • + 3 years and up to 75,000 km or up to 150,000 km

The conventional Maximum Care and Powertrain Care Warranties offer you additional benefits: repair and replacement of defective components with Original Parts or reconditioned parts from Alfa Romeo • transferability of coverage to the new owner if you sell your car.

EASY PACK: SCHEDULED SERVICING FOR YOUR CAR

With Easy Pack you can save money on scheduled servicing expenses for your car, by buying between 2 and 5 services in advance, starting with the first. Easy Pack offers you 4 different options: 2-service pack* • 3-service pack* • 4-service pack* • 5-service pack*

*Services included starting from the first. Parts whose replacement is not expressly specified in the scheduled servicing plan for the vehicle are not included. To find out the service intervals for your vehicle, consult the Alfa Romeo Owner Handbook.

PREMIUM PACK: COMPLETE SERVICING FOR YOUR CAR

For complete maintenance of your Alfa Romeo car, there's the Premium Pack formula, the made-to-measure programme that allows scheduled services and the replacement of the car parts most subject to wear. Premium Pack offers you 3 different servicing options, Bronze, Silver and Gold, to better meet your needs and those of your car. Compare the options:

BRONZE option - 2 services included* plus the replacement of:

1 front brake pad kit • 1 rear brake pad kit • 2 front wiper blade kits • 2 rear wiper blade kits

SILVER option - 3 services included* plus the replacement of:

1 front disc kit • 1 front shock absorber kit • 1 rear shock absorber kit • 2 front brake pad kits • 2 rear brake pad kits • 3 front wiper blade kits • 3 rear wiper blade kits

GOLD option - 4 services included* plus the replacement of:

1 clutch • 1 battery • 2 front disc kits • 1 rear disc kit • 1 front shock absorber kit • 1 rear shock absorber kit • 4 front brake pad kits • 3 rear brake pad kits • 5 front wiper blade kits • 5 rear wiper blade kits

*Services included starting from the first. Parts whose replacement is not expressly specified in the scheduled servicing plan for the vehicle are not included. To find out the service intervals for your vehicle, consult the Alfa Romeo Owner Handbook.

The advantages of Easy Pack and Premium Pack:

- **MORE SAVINGS:** Fixed discount over time on original parts used for routine and extraordinary maintenance of your car.
- **MORE CERTAINTY:** The certainty of always being recognised at Alfa Romeo Dealerships and always having servicing carried out with original spare parts by highly qualified, specialist technicians.
- **MORE VALUE:** the Easy and Premium packs can be used by the new owner if the vehicle is sold.
- **MORE FREEDOM:** The certainty of being able to count on our extensive service network, which you can reach wherever you are.

INSURANCE SERVICES AND FINANCE PACKAGES

However you choose to experience mobility, **Sava** satisfy your needs with finance and leasing packages combined with exclusive insurance services.

Instalments

This is the financial solution that allows you to spread the payment of all or part of your new Alfa Romeo over a period ranging from 12 to 72 months, or a part of your used car for a period ranging from 12 to 60 months.

Leasing

If you are a professional, freelance worker or run your own business, this solution offers you the option of using your car without tying up your capital. You have a choice of contract term (from 24 to 60 months) and advance, plus a flexible final redemption value.

Alfa Freedom

To finance your Alfa Romeo, you can choose to pay a variable advance of between 0% and 50%, possibly adding that sum to the value of your used car given in part-exchange. At the end of the 3 years you can choose to keep your Alfa Romeo, paying the balance in a single transaction or spreading the payment, or change your car for a brand new Alfa Romeo.

SAVA, along with the finance package, offers you a comprehensive range of services to protect you from every unexpected event: **Indelible marking** on key vehicle components as a maximum deterrent against theft, the **Fire&Theft, Collision** (protection against collisions with other vehicles), and **Kasko** (fully comprehensive insurance) policies, the **Prestito Protetto** protected loan (e.g. instalment repayment if you lose your job).

"STRADAFACENDO" WARRANTIES

StradaFacendo Warranties are the ideal solution for keeping your new car in shape, offering you worry-free driving right away. The Stradafacendo Warranty offer includes three types of cover (Stradafacendo, L, XL) with three possible payment methods (financing with vehicle, financing of policy only, cash)

STRADAFACENDO (duration +24 months, 80,000 km): covers mechanical and electrical faults related to the main vehicle components: Engine / Cooling system / Gearbox / Transmission.

STRADAFACENDO L (duration from +12 to +72 months): drive your car worry-free. The **unlimited mileage** warranty covers you against mechanical and electrical faults on one or more vehicle components (request the pamphlet for the list of cover).

STRADAFACENDO XL (duration from +12 to +72 months): unique on the market, **unlimited mileage**, covers all mechanical and electrical faults, only excluding maintenance operations (oil change, air cleaner/oil filter replacement, etc.), replacement of parts subject to wear, bodywork operations, clutch wear.

And on all **STRADAFACENDO** warranties, included in the price, you'll get the same Roadside Assistance available in the first two years, a service available 24 hours a day, every day, throughout Europe.

For further information, contact: Contact Center 199.818.203 (from Monday to Friday from 9.00 am to 5.00 pm) - www.fgacapital.it - www.sava.it

HIRE SERVICES

Long-term hire is the ideal solution for **companies** and **self-employed professionals** who want to benefit from and appreciate all the advantages of their new car without the burden of ownership and the duties that this involves. Long-term hire offers tangible benefits:

- You can free yourself from all the responsibilities of managing the vehicle
- Simplification of administrative management: single payment for several services
- Customisation of the hire services to the customer's needs
- Flexible vehicle fleet management formula
- Rely on a qualified partner with expertise in management of operating costs of a vehicle fleet
- Direct cost known from the beginning for the entire period
- No tying up of capital
- Deduction of the instalment according to the business category and use of the vehicle.

For information contact your Dealership or visit the www.leasys.com site.

SPECIAL SALES PROGRAMMES

Autonomy is a multi-faceted programme that covers specific trim levels for cars and passenger transport vehicles and also roadside assistance and financial services aimed at people with reduced motor abilities. It also includes comprehensive assistance in obtaining a special driving licence from 13 Mobility Centres. Call the special freephone number 800838333 to obtain full and complete information based on your needs.

ALFA ROMEO INFO MOBILE

This is the original Alfa application for your iPhone. It is designed to always be on hand, wherever you go, and to offer you all the information and services that you want quickly and simply. Alfa Romeo is launching an iPhone application in Europe for all motorists, offering its customers an innovative, simple and direct service. Access a wide range of services* at the touch of a finger: YOUR PROFILE, FIND A DEALERSHIP, ROAD TEST, OWNER HANDBOOK, CONTACT US, NEWS AND PROMOTIONS, FIND YOUR CAR, DUE DATES, TRAFFIC, ROADSIDE ASSISTANCE AND X-RAY. ALFAROMEO INFO MOBILE is completely free of charge. Download it now from the App Store.

*For details on the services available in your country, visit: www.alfaromeoinfomobile.com

SAFE DRIVING CENTRE - VARANO DE' MELEGARI



Le vetture Alfa Romeo hanno pensato a tutto in fatto di sicurezza, ma da sempre il fattore più importante è la persona che impugna il volante. Per questo, Alfa Romeo in collaborazione con Andrea de Adamich, ha fondato il Centro Internazionale Guida Sicura, una scuola capace di trasferire tutte le tecniche per una guida più consapevole. Più di 20 anni di attività e successi, 180 giornate di Corsi e 4.000 partecipanti ogni anno, un autodromo a disposizione esclusiva e un team con i migliori piloti. Il Centro Internazionale Guida Sicura è un punto di riferimento in Europa, certificato ISO 9001. I Corsi di Guida sono adatti a tutti, dagli appassionati che cercano l'emozione del circuito, ai neopatentati che desiderano dare fin da subito un'impostazione corretta alla propria guida, fino ai guidatori di tutti i giorni che vogliono evitare di correre rischi sulle strade. Per info e prenotazioni consultare il sito www.alfaromeo.it o rivolgersi ai Concessionari Alfa Romeo.

STANDARD AND OPTIONAL EQUIPMENT

TWO-TONE FABRIC



298 Black-Anthracite
with door panels
and Black dashboard surround

COMPETIZIONE FABRIC



168 Grey
with door panels
and Black dashboard surround



685 Black-Tobacco
with door panels
and Black dashboard surround

TWO-TONE LEATHER AND FABRIC



341 Black-Anthracite
with door panels
and Black dashboard surround



343 Tobacco-Anthracite
with door panels
and Tobacco dashboard surround

LEATHER AND ALCANTARA



323 Black
with door panels
and Black dashboard surround

LEATHER



402-408-923 Black with
door panels
and Black dashboard surround



465-470-495 Tobacco
with door panels
and Tobacco dashboard surround



401-901 Red
with door panels
and Red dashboard surround