

GS

14



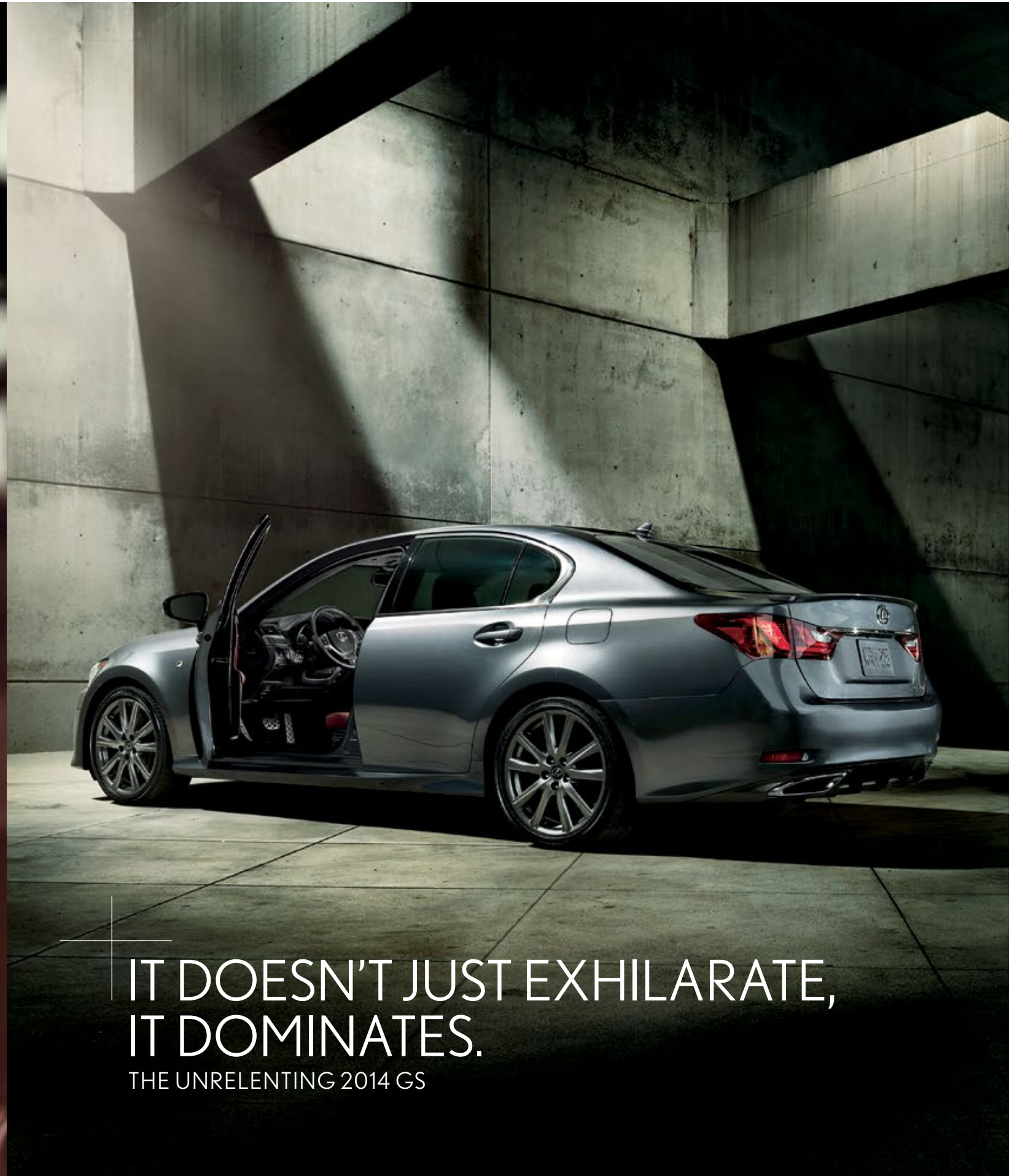


GS 350 306-hp¹ 3.5-liter V6. Eight-speed automatic transmission with paddle shifters or six-speed (AWD). Drive Mode Select and Remote Touch² with color multimedia display and backup camera.³ Available in RWD or AWD.

GS 350 F SPORT Exclusive interior and exterior styling. Performance upgrades include sport-tuned Adaptive Variable Suspension and Variable Gear-Ratio Steering with available Dynamic Rear Steering (RWD). Available in RWD or AWD.

GS 450h 338-hp¹ (total system horsepower), 3.5-liter Atkinson-cycle V6 paired with Lexus Hybrid Drive. Adaptive Variable Suspension, sustainable bamboo interior trim and lower rear valance with concealed exhaust. Available in RWD.

THE ULTIMATE POWER IS CONTROL.



IT DOESN'T JUST EXHILARATE,
IT DOMINATES.

THE UNRELENTING 2014 GS

“THE BEST-HANDLING LEXUS
THIS SIDE OF THE LFA.”

—EDMUNDS.COM, 2013



**F SPORT
PERFORMANCE**

The iconic F SPORT grille and aggressive front fascia may be the first things the competition sees coming, but it's what's under the hood that will have them watching you drive away. Like a new eight-speed automatic transmission in the rear-wheel drive GS 350 models to help you seamlessly shift through gears. And, with the GS F SPORT, exclusive performance upgrades and a track-honed suspension tuned by the same team behind the LFA supercar help forge an unprecedented connection to the road.

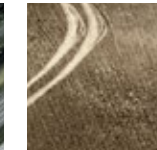
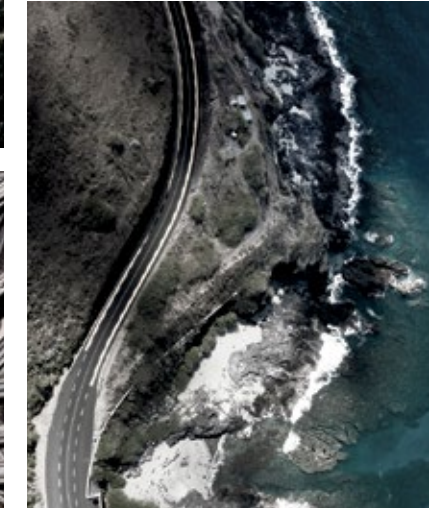


**F SPORT
INTERIOR**

The GS F SPORT doesn't only drive differently, you actually see and feel the difference before ever engaging the throttle. The 16-way adjustable sport driver's seat with power side bolsters, four-way lumbar and added thigh support hugs your body the way the vehicle hugs curves. Race-inspired features include an F SPORT-badged steering wheel and shift knob trimmed in perforated leather, Striated Aluminum accents, a striking black headliner and aluminum sport pedals. All designed to up the exhilaration quotient with every turn.



OUR TEST TRACK WAS A MILLION MILES LONG.



Lexus engineers traveled the equivalent of 26 times around the Earth—from the ice-covered streets of Moscow to the extreme heat of Death Valley—all to develop the precise driving feel and responsiveness of the GS. Strap yourself in and carve through that first turn, and you'll quickly discover it was worth every inch.



While the GS may scream performance, it also shouts comfort and innovation. Of the many features inside, you'll appreciate a stunning array of interior color options, seductive ambient lighting and an available Climate Concierge system designed to automatically provide individualized comfort with everything from atmospheric air control to heated and ventilated seats.

12.3 INCHES OF INNOVATION. SURROUNDED BY 190.7 INCHES OF INNOVATION.



ADVANCED CONNECTIVITY

Keep your hands on the wheel and eyes on the road. Using your voice, access the available 12.3-inch split-screen display with available Lexus Enform^{®4} with Safety Connect.^{®5} This offers live, 24-hour navigation and emergency services. The subscription-free App Suite⁴ makes ordering movie tickets and making dinner reservations easier than ever. And use Siri[®] Eyes Free⁶ to access e-mails, send text messages and more.



MULTI-DIMENSIONAL AUDIO

Imagine a system so advanced it surrounds you with three-dimensional sound while accounting for the volume and tone of unwanted ambient noise. This is the available 835-watt, 17-speaker Mark Levinson[®] Premium Surround Sound Audio System.⁷ An audio experience that more resembles a concert hall than an automobile, immersing the cabin in sound quality that was once reserved for six-figure home audio systems.



INNOVATIVE TECHNOLOGY

To help keep you more aware of what's around you, the available full-color Heads-up Display can project key information onto the windshield. Simple navigation directions, audio information, vehicle speed, current gear and RPM are always within your natural line of sight. And an available Blind Spot Monitor⁸ warns you of vehicles that are approaching or positioned in adjacent lanes.



VARIABLE DRIVING MODES

Drive Mode Select's Sport S mode alters the powertrain for faster gear changes and more dynamic throttle response. The available Sport S+ mode also tightens the suspension and increases steering response. In ECO mode, the throttle response and engine power output are moderated for increased fuel efficiency. And in EV mode,⁹ the GS Hybrid can be driven for short distances at low speeds on battery power alone.



REAR-SEAT CONTROLS AND REAR SUNSHADE

Innovation hasn't been limited to the driver. Available rear-seat controls offer passengers the convenience of operating the audio system, rear-seat climate zone and heated outboard seats. Additionally, to help reduce unwanted glare, the GS offers manual rear side-window sunshades and a power rear sunshade that can be operated at the push of a button.



DRIVER SUPPORT

The available Pre-Collision System¹⁰ is designed to detect whether you're facing away from the road or have your eyes closed when it detects a potential frontal collision. If so, it will attempt to warn you, as well as automatically begin braking prior to impact. When you are using cruise control, available Lane Keep Assist¹¹ is designed to steer the vehicle back toward the center of the lane if you begin to veer.



INTERIOR DESIGN

Offering an assortment of design options, your GS can be as individual as it is invigorating. Choose between multiple leather trim options, from a timeless Black to a bold Cabernet. Four types of decorative accents from Linear Espresso wood to Striated Aluminum. And among the bamboo accents available on the GS, you'll find a handcrafted bamboo steering wheel created from a single bowed piece.



18-WAY POWER FRONT SEATS

This is comfort over five years in the making. Working alongside a university research team, Lexus engineers studied everything from skeletal angles to high-end office chairs and arrived at this: Offering 18 types of customization, including shoulder support, butterfly headrest and variable seat cushion length, the power front seats on the Luxury Package-equipped GS are nothing short of an ergonomic masterpiece.





GS HYBRID The GS is, above all else, a performance vehicle. And the GS Hybrid is most certainly not the exception to that rule. Boasting 338 total system horsepower¹ and the efficiency of a hybrid, it offers an impressive 34 MPG¹² highway rating, and rockets from 0 to 60 in a mere 5.6 seconds.¹¹³

Variable Gear-Ratio Steering*

This varies turning response with speed to help provide easier maneuverability at low speeds and greater stability at high speeds.



Adaptive Variable Suspension

This monitors and adjusts the shock absorber setting at each wheel, helping to reduce body lean as you enter a turn.

14-inch front brakes with two-piece rotors*

These help provide optimized braking response and enhanced cooling for reduced brake fade.

Available Dynamic Rear Steering*

Depending on speed, this turns the front and rear wheels in the same or opposing directions to help provide optimal agility.

19-inch staggered-width wheels***

When exiting a curve, the wider rear wheels help provide even greater traction and handling.



Exclusive F SPORT features, including the available Lexus Dynamic Handling system, help anticipate and deliver the ideal handling behavior for virtually any situation. This in turn provides you with an unparalleled connection to the road.



A. Black leather interior with Bamboo trim **B.** Available Mark Levinson Premium Surround Sound Audio System⁷ **C.** 3.5-in color TFT multi-information display and electroluminescent instrumentation **D.** GS F SPORT Drive Mode Select **E.** Ambient lighting **F.** GS F SPORT race-inspired aluminum pedals



G. Available power rear sunshade **H.** Remote Touch² controller **I.** Available rear-seat climate and audio controls **J.** Contrast stitching **K.** Available color Heads-up Display **L.** Available rear spoiler. For complete list of Genuine Lexus Accessories, visit lexus.com/GS/accessories



ALL WEATHER DRIVE

By monitoring current driving conditions, available all-wheel drive automatically allocates engine power between the front and rear wheels from a rear-biased 30/70 (front/rear) torque split to 50/50, depending on conditions. This can provide improved traction and control on a wide range of road surfaces and in inclement weather.



KEY STANDARD FEATURES

SmartAccess^{15,16} with push-button Start/Stop // Dual-zone automatic climate control with interior air filter and smog sensor // Power tilt-and-telescopic steering column // Lexus Memory System // Power tilt-and-slide moonroof // Electrochromic (auto-dimming) mirrors // HomeLink[®] // Perforated leather-trimmed interior // 10-way (including lumbar) power front seats // Drive Mode Select // 8.0-inch high-resolution color multimedia display // Remote Touch² // USB iPod^{®17} integration // Bluetooth^{®18} // Backup camera³ // Siri Eyes Free⁶ Mode

For complete list, visit lexus.com/GS/features

INDIVIDUAL OPTIONS

Power trunk open/close // Mark Levinson Premium Audio System⁷ // Pre-Collision System (PCS)¹⁰ with Driver Attention Monitor,¹⁰ Dynamic Radar Cruise Control¹⁹ // Lane Keep Assist¹¹ with Lane Departure Warning²⁰ // Blind Spot Monitor⁸ with Rear Cross-Traffic Alert²¹ and power-folding outside mirrors // Color Heads-up Display // Intuitive Parking Assist // Lexus Dynamic Handling with Dynamic Rear Steering (GSFSPORT RWD) // 18-inch split-five-spoke alloy wheels¹⁴ // Heated rear seats (Luxury Package)

For complete list, visit lexus.com/GS/options

PACKAGES

GS PREMIUM PACKAGE (Standard on GS450h)

Rain-sensing wipers // Heated and ventilated front seats // Power rear sunshade // Climate Concierge

LUXURY PACKAGE

(Includes all GS Premium Package equipment) + Drive Mode Select adds Sport S+ mode // Adaptive Variable Suspension (AVS) // 18-inch split-nine-spoke alloy wheels¹⁴ with Superchrome finish // Semi-aniline leather interior trim // Linear Espresso wood (GS) or Matte Bamboo (GSh) interior trim // Wood- and leather-trimmed steering wheel // 18-way power front seats // Lexus Memory System for front-passenger seat // Three-zone automatic climate control // Rear-door manual sunshades // Adaptive Front Lighting System²² // Bi-LED headlamps (GSh only) // LED foglamps

NAVIGATION PACKAGE

Navigation System²³ // 12.3-inch high-resolution split-screen multimedia display // Compatible mobile-phone integration // Enhanced Bluetooth technology¹⁸ // Lexus Enform^{®4} with Destination Assist and eDestination. Subscription required. One-year trial subscription included // Subscription-free Lexus Enform App Suite⁴ with Bing,TM iHeartRadio, MovieTickets.com, OpenTable,[®] Pandora,[®] Yelp[®] and Facebook Places // NavTraffic,^{TM23,24} NavWeather,^{TM23,24} Fuel Prices and Sports and Stocks with SiriusXM^{23,24} Subscription required. One-year trial subscription included

COLD WEATHER PACKAGE (Standard on GS450h)

Heated steering wheel // High-intensity interior heater // Headlamp washers (standard on AWD) // Windshield-wiper deicer // Water-repellent front-door glass // LED headlamps (GSFSPORT)

GS 350 F SPORT

(Includes all GS Premium Package equipment) + Drive Mode Select adds Sport S+ mode // 19-inch split-five-spoke alloy wheels¹⁵ with Dark Graphite finish // FSPORT-tuned Adaptive Variable Suspension (AVS) // Variable Gear-Ratio Steering (VGRS) (RWD only) // 14.0-in, two-piece front-brake rotors with monoblock four-piston calipers (RWD only) // 16-way FSPORT driver's seat // Striated Aluminum interior trim // Black headliner // FSPORT exterior styling including unique front bumper, upper and lower grille inserts, rear valance and rear spoiler

For complete list, visit lexus.com/GS/packages
For complete list of Genuine Lexus Accessories, visit lexus.com/GS/accessories

WHEELS



17-in nine-spoke alloy wheels¹⁴
Standard



18-in split-five-spoke alloy wheels¹⁴ with Superchrome finish
Available



18-in split-nine-spoke alloy wheels¹⁴ with Superchrome finish
Luxury Package



19-in split-five-spoke alloy wheels¹⁴ with Dark Graphite finish
GSFSPORT

For more info, visit lexus.com/GS/wheels

KEY SPECS

306^{HP1}

GS / F SPORT

3.5L V6 ENGINE

338^{TOTAL SYSTEM HP1}

GSh w/Lexus Hybrid Drive

3.5L V6 ATKINSON-CYCLE ENGINE

0-60 IN 5.7^{S1,13} / 5.8^{S1,13} / 5.6^{S1,13}

GS RWD / F SPORT RWD

GS AWD / F SPORT AWD

GSh

PERFORMANCE

8-SPEED

GS RWD / F SPORT RWD

AUTOMATIC TRANSMISSION WITH PADDLE SHIFT

6-SPEED

GS AWD / F SPORT AWD

AUTOMATIC TRANSMISSION WITH PADDLE SHIFT

ECVT

GSh

ELECTRONICALLY CONTROLLED CONTINUOUSLY VARIABLE TRANSMISSION

19 / 29 / 23¹²

GS RWD / F SPORT RWD

19 / 26 / 21¹² EST MPG

GS AWD / F SPORT AWD

RWD OR AWD

STANDARD GS / F SPORT / GSh

AVAILABLE GS F SPORT

DRIVETRAIN

29 / 34 / 31¹² EST MPG

GSh

FUEL ECONOMY, ESTIMATED RATINGS (CITY / HIGHWAY / COMBINED)



WIDTH

72.4 IN

HEIGHT

57.3 IN (RWD, Hybrid)
57.9 IN (AWD)

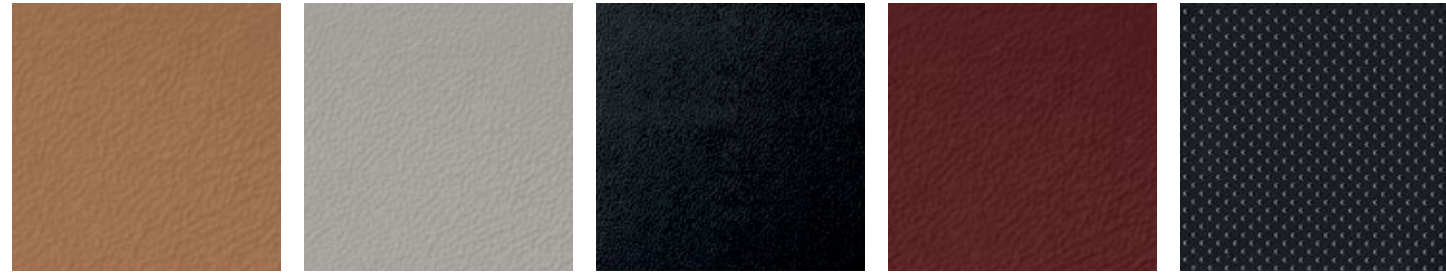


OVERALL LENGTH

190.7 IN

For complete specs, visit lexus.com/GS/specs

INTERIOR



FLAXEN
LEATHER

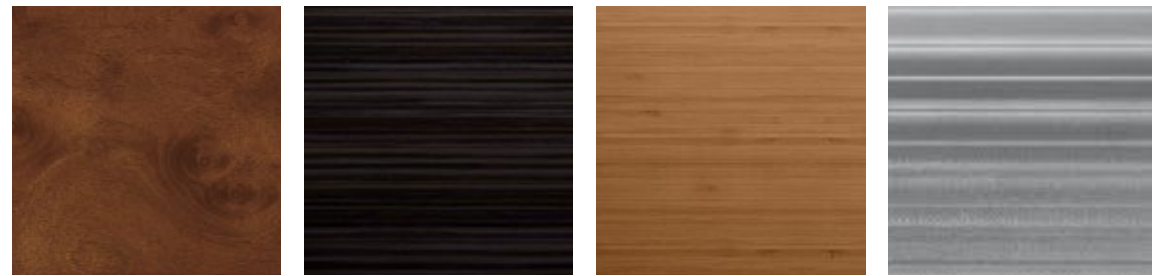
LIGHT GRAY
LEATHER

BLACK
LEATHER

CABERNET
LEATHER

BLACK WITH WHITE
PERFORATIONS
LEATHER

TRIM



MATTE DARK
BROWN WALNUT*

LINEAR ESPRESSO
WOOD†

MATTE BAMBOO

STRIATED
ALUMINUM

EXTERIOR



DEEP SEA MICA

STARFIRE PEARL

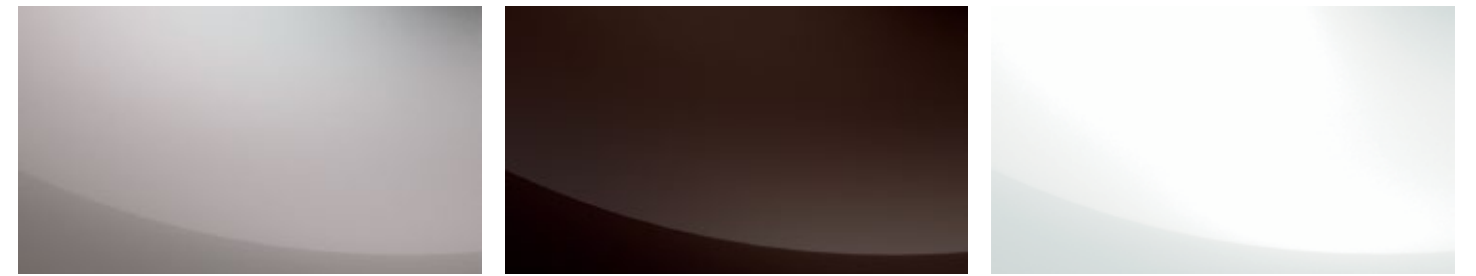
NEBULA GRAY PEARL



METEOR BLUE MICA

OBSIDIAN

RIVIERA RED



LIQUID PLATINUM

FIRE AGATE PEARL

ULTRA WHITE

LEATHER INTERIOR	EXTERIOR										TRIM			
	Deep Sea Mica	Starfire Pearl	Nebula Gray Pearl	Meteor Blue Mica	Obsidian	Riviera Red	Liquid Platinum	Fire Agate Pearl	Ultra White	Matte Dark Brown Walnut*	Linear Espresso Wood†	Matte Bamboo	Striated Aluminum	
Flaxen	■●▲	■●	■●▲	■●	■●▲	■●▲	■●▲	■●	▲	■	■	●	▲	
Light Gray	■●	■●	■●	■●	■●	■●	■●			■	■	●		
Black	■●	■●	■●	■●	■●	■●	■●	■●		■	■	●		
Cabernet	▲		▲		▲		▲		▲				▲	
Black with White Perforations	▲		▲		▲	▲	▲		▲				▲	

■ GS 350

● GS 450h

▲ GSFSport

* GS 350, GS 350 Premium Package only

† GS 350 Luxury Package only

“THIS LEXUS OOZES MODERN SOPHISTICATION.”

—MOTOR TREND, JUNE 2012

WARRANTY Four-year/50,000-mile Lexus Limited Warranty. Six-year/70,000-mile Powertrain Warranty. Six-year/unlimited-mileage Corrosion Perforation Warranty. All warranties with zero deductible. See the *GS Warranty and Services Guide* at your Lexus dealer for details. **DISCLOSURES** **1.** Ratings achieved using the required premium unleaded gasoline with an octane rating of 91 or higher. If premium fuel is not used, performance will decrease. **2.** Be sure to obey traffic regulations and maintain awareness of road and traffic conditions. **3.** The backup camera does not provide a comprehensive view of the rear area of the vehicle. You should also look around outside your vehicle and use your mirrors to confirm rearward clearance. Cold weather may limit effectiveness and view may become cloudy. **4.** Always drive safely, obey traffic laws & focus on the road while driving. Apps/services vary by phone/carrier; functionality depends on many factors. Select apps use large amounts of data; you are responsible for charges. Apps & services subject to change. Apps identified by ™ or ® are trademarks or registered trademarks of their respective companies. For enrollment and more details, see lexus.com/enform. **5.** Contact with the response center may not be available in all areas. Service Agreements required. A variety of subscription terms available; charges will vary. See lexus.com for details. **6.** Always drive safely, obey traffic laws & focus on the road while driving. Siri® is available in Beta only on iPhone® 4S, iPhone® 5, iPad® with Retina® display, iPad® mini, & iPod® touch, 5th gen. & requires Internet access. Siri® is not available in all languages or all areas & features vary by area. Data charges may apply. See Apple.com & phone carrier for details. **7.** Mark Levinson® is a registered trademark of Harman International Industries, Inc. **8.** Do not rely exclusively on the Blind Spot Monitor. Always look over your shoulder and use your turn signal. There are limitations to the function, detection, range and clarity of the monitor. For a complete list of limitations and directions regarding use of the monitor, see *Owner's Manual*. **9.** CAUTION! When driving a hybrid vehicle, pay special attention to the area around the vehicle. Because there is little vehicle noise in electric-only mode, pedestrians, people riding bicycles or other people and vehicles in the area may not be aware of the vehicle starting off or approaching them, so take extra care while driving. EV mode works under certain conditions at low speeds for up to a mile. See *Owner's Manual*. **10.** The Pre-Collision System is designed to help reduce the crash speed and damage in certain frontal collisions only. The included Driver Attention Monitor is designed to alert the driver if a potential hazard is detected ahead and the driver's face appears to be turned away. They are not collision-avoidance systems and are not substitutes for safe and attentive driving. System effectiveness depends on many factors. See *Owner's Manual* for further information. **11.** Lane Keep Assist is designed to read lane markers under certain conditions. It provides a visual and audible alert and slight steering force when lane departure is detected. It is not a collision-avoidance system or a substitute for safe and attentive driving. Effectiveness depends on many factors. See *Owner's Manual* for more information. **12.** 2014 EPA-estimated ratings. Actual mileage will vary. **13.** Performance figures are for comparison only and were obtained with prototype vehicles by professional drivers using special safety equipment and procedures. Do not attempt. **14.** 17-, 18- or 19-in performance tires are expected to experience greater tire wear than conventional tires. Tire life may be substantially less than 20,000 miles (17-in) or 15,000 miles (18-in or 19-in), depending upon driving conditions. **15.** The SmartAccess system may interfere with some pacemakers or cardiac defibrillators. If you have one of these medical devices, please talk to your doctor to see if you should deactivate this system. **16.** The engine immobilizer is a state-of-the-art anti-theft system. When you insert your key into the ignition switch or bring a SmartAccess fob into the vehicle, the key transmits an electronic code to the vehicle. The engine will only start if the code in the transponder chip inside the key/fob matches the code in the vehicle's immobilizer. Because the transponder chip is embedded in the key/fob, it can be costly to replace. If you lose a key or fob, your Lexus dealer can help. Alternatively, you can find a qualified independent locksmith to perform high-security key services by consulting your local *Yellow Pages* or by contacting www.aloa.org. **17.** iTunes® and iPod® are registered trademarks of Apple Inc. All rights reserved. **18.** The Bluetooth® word mark and logos are registered trademarks owned by Bluetooth SIG, Inc. and any use of such marks by Lexus is under license. Other trademarks and trade names are those of their respective owners. The phones on lexus.com have been tested for Bluetooth® wireless technology compatibility with Lexus vehicles. Performance will vary based on phone software version, coverage and your wireless carrier. **19.** Dynamic Radar Cruise Control is designed to assist the driver and is not a substitute for safe and attentive driving practices. See *Owner's Manual* for details. **20.** Lane Departure Warning is designed to read lane markers under certain conditions and provide visual and audible alerts when lane departure is detected. It is not a collision-avoidance system or a substitute for safe and attentive driving. Effectiveness depends on many factors. See *Owner's Manual* for more information. **21.** Do not rely exclusively on the Rear Cross-Traffic Alert system. Always look over your shoulder and use your mirrors to confirm rear clearance. There are limitations to the function, detection, range and clarity of the system. To learn more, see *Owner's Manual*. **22.** The Adaptive Front Lighting System helps improve vision at night. Situations such as dirty windshield, rapidly changing light conditions or hilly terrain will limit effectiveness, requiring the driver to manually turn off. See *Owner's Manual* for details. **23.** Always drive safely, obey traffic laws & focus on the road while driving. Availability and accuracy of the information provided by the Navigation System is dependent upon many factors. Use common sense when relying on information provided. Services and programming subject to change. Services not available in every city or roadway. Navigation updates are available at an additional cost from your local Lexus dealer. See your *Navigation System Owner's Manual* or Lexus dealer for details. **24.** XM services require a subscription after 90-day trial period. Subscriptions governed by SiriusXM™ Customer Agreement available at SiriusXM.com. **If you decide to continue your SiriusXM™ service at the end of your complimentary trial, the plan you choose will automatically renew and bill at then-current rates unless you call 1-800-877-3987 to cancel.** Fees and programming subject to change. Available only to those at least 18 years of age in the 48 contiguous United States and D.C.

Lexus strives to build vehicles to match customer interest, and thus they typically are built with popular options and option packages. Not all options/packages are available separately, and some may not be available in all regions of the country. See lexus.com for information about options/packages commonly available in your area. If you would prefer a vehicle without any or with different options, contact your dealer to check for current availability or the possibility of placing a special order. Specifications, features, equipment, technical data, performance figures, options, and color and trim are based upon information available at time of printing, are subject to change without notice, and are for mainland U.S.A. vehicles only. Some vehicles shown with available equipment. See your Lexus dealer for details. Lexus reminds you to wear seatbelts, secure children in rear seat, obey all traffic laws and drive responsibly. For more information, call 800-USA-LEXUS (872-5398) or visit lexus.com. To learn more about your financing options, contact your Lexus dealer or call Lexus Financial Services at 800-874-7050.

